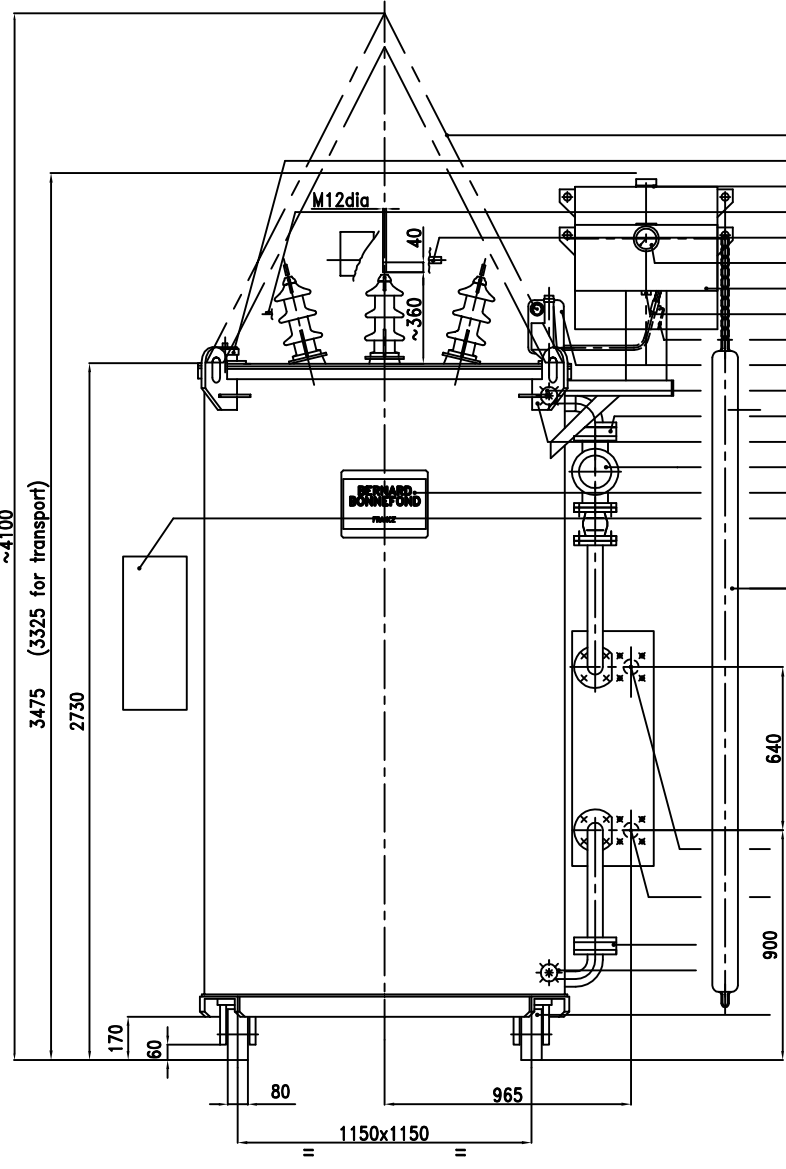


View F - secondary terminal

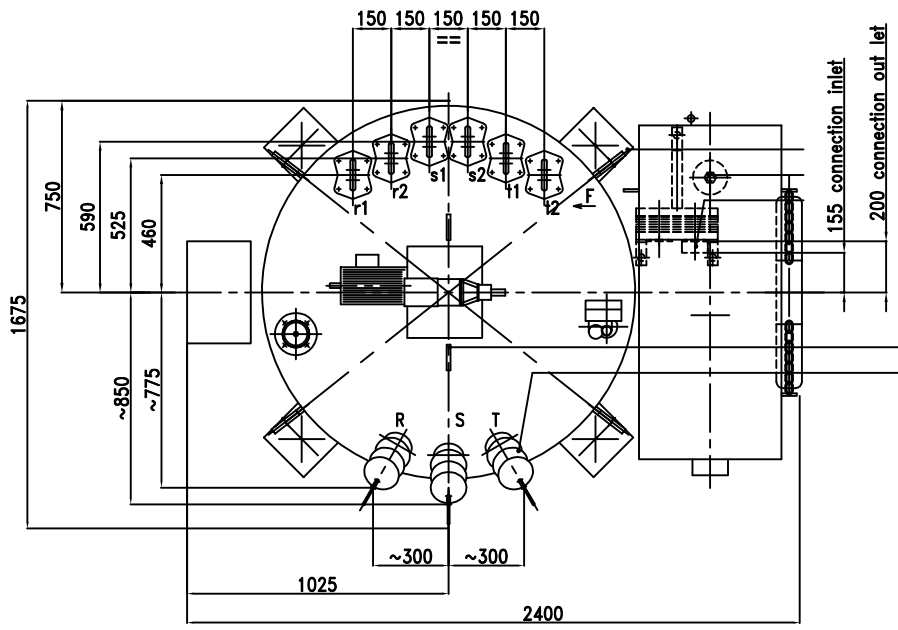


- Link
- Safety valve
- Filling plug
- Motor drive
- Electrical safeties and encoder
- Oil level indicator
- Surge tank
- Draining plug
- Valve
- Protective system
- Treatment, sampling valve
- Valve for cooling circuit
- Lifting rings
- Pump
- Rating plate
- Cubicle for auxillary

Nitrogen supple tank hanging on the Expansion tank

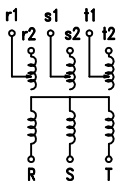
- Water out let . Connection DIN 50
- 4 studs M16 dia on 125 dia
- Water in let . Connection DIN 50
- 4 studs M16 dia on 125 dia
- Valve for cooling circuit
- Drain valve

Swivelling bearing rollers 200 dia  
80 width



- Earthing terminal
- Air dryer
- Oil/water heat exchanger
- Flow rate : 7.75 m<sup>3</sup>/h
- Inlet temperature : 25° c maxi.
- Max working pressure : 1600 kPa

Lifting rings active part  
Primary terminal 20kV/250A (DIN 42 531)



Untanking mass : 6700 kg  
Mass of insulating oil : 2700 kg  
Total mass : 11000 kg

All dimensions are in mm

Designation		DIMENSIONAL DRAWING		
Materiel VARIVOLT 4318kVA / 13.80kV-181A / 3(190 to 370V)-4950A / 60Hz				
Dessine -				
Date -				
Echelle -				

BERNARD  
BONNEFOND

N

rep	nb	designation	matiere	
Cde		Client		